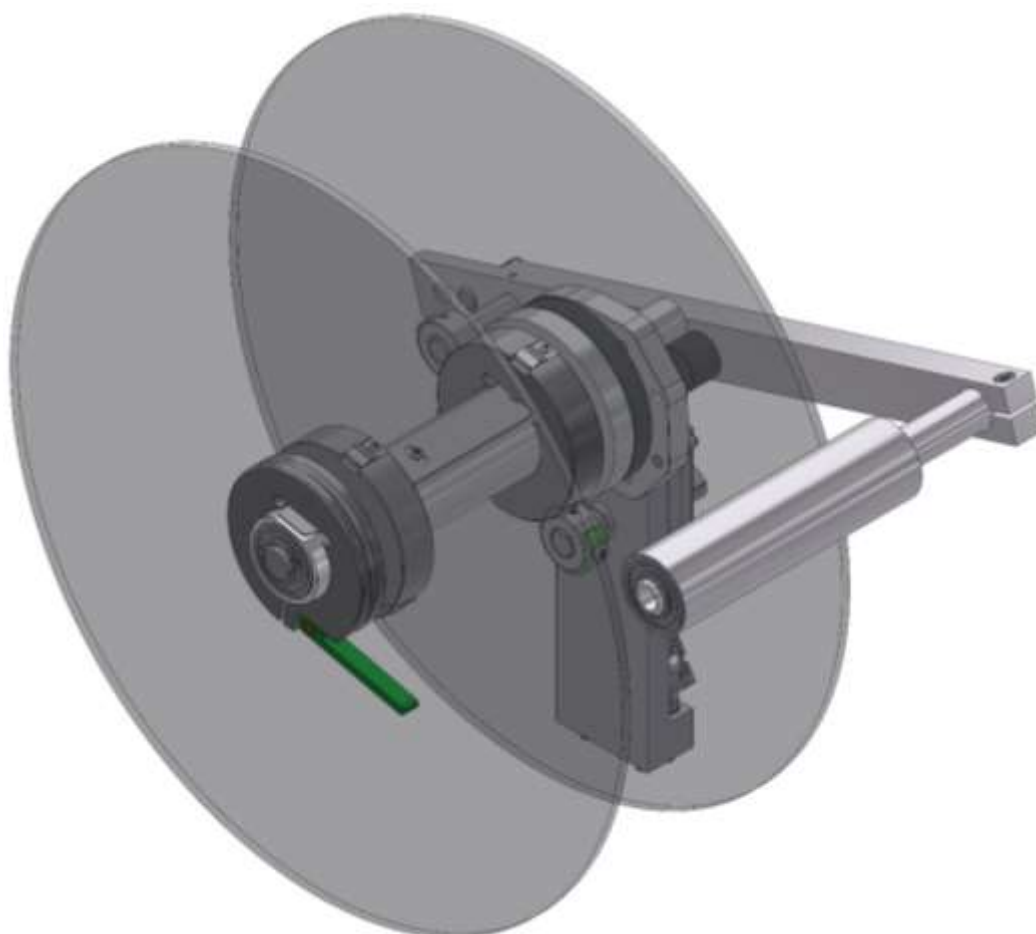


## External unwinder PA 75B

Part number 92.74.025B

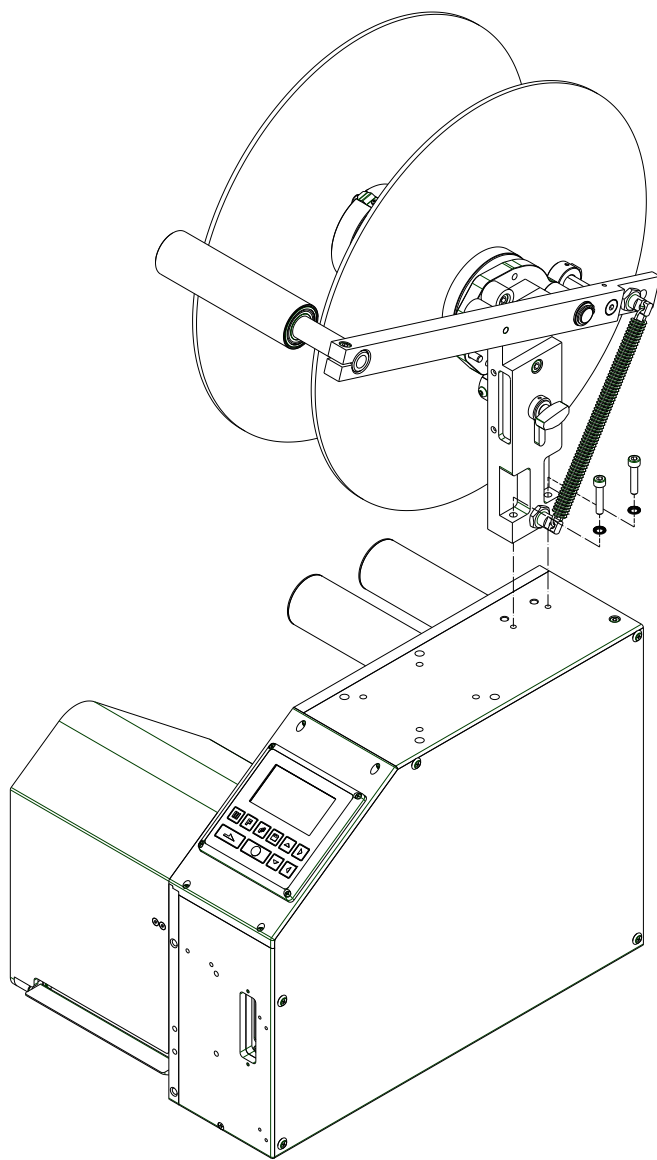


### Usage

The optional external unwinder PA 75B is applicable both for internal and external wound labels up to an outside diameter of 330 mm. A regular label supply of large label rolls can be regulated with the integrated brake.

## Installation

The installation is done directly at the cover plate of ILX.

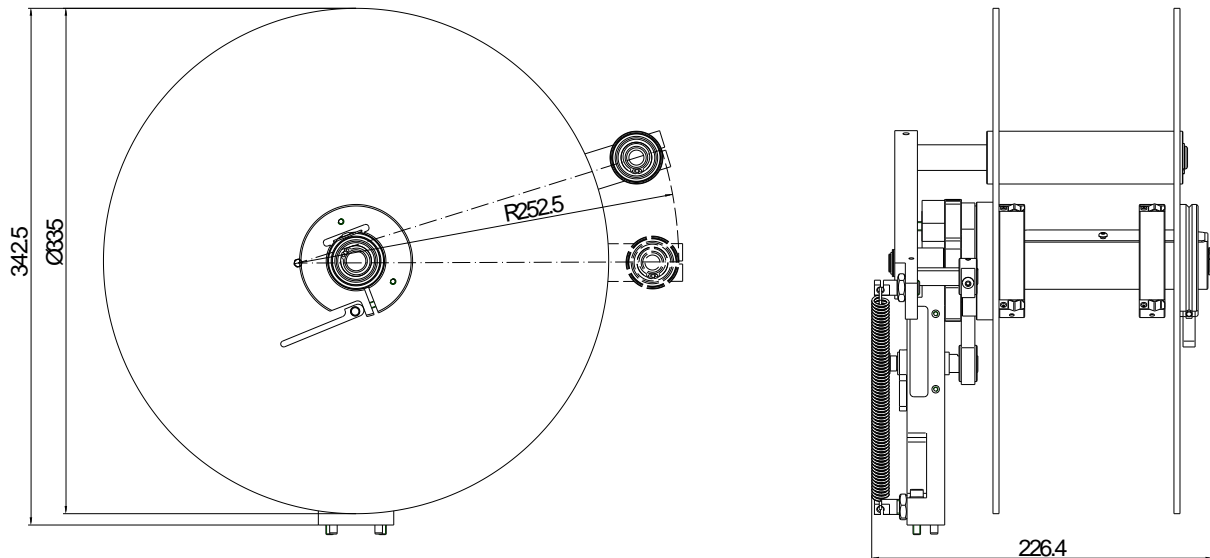


## Technical data

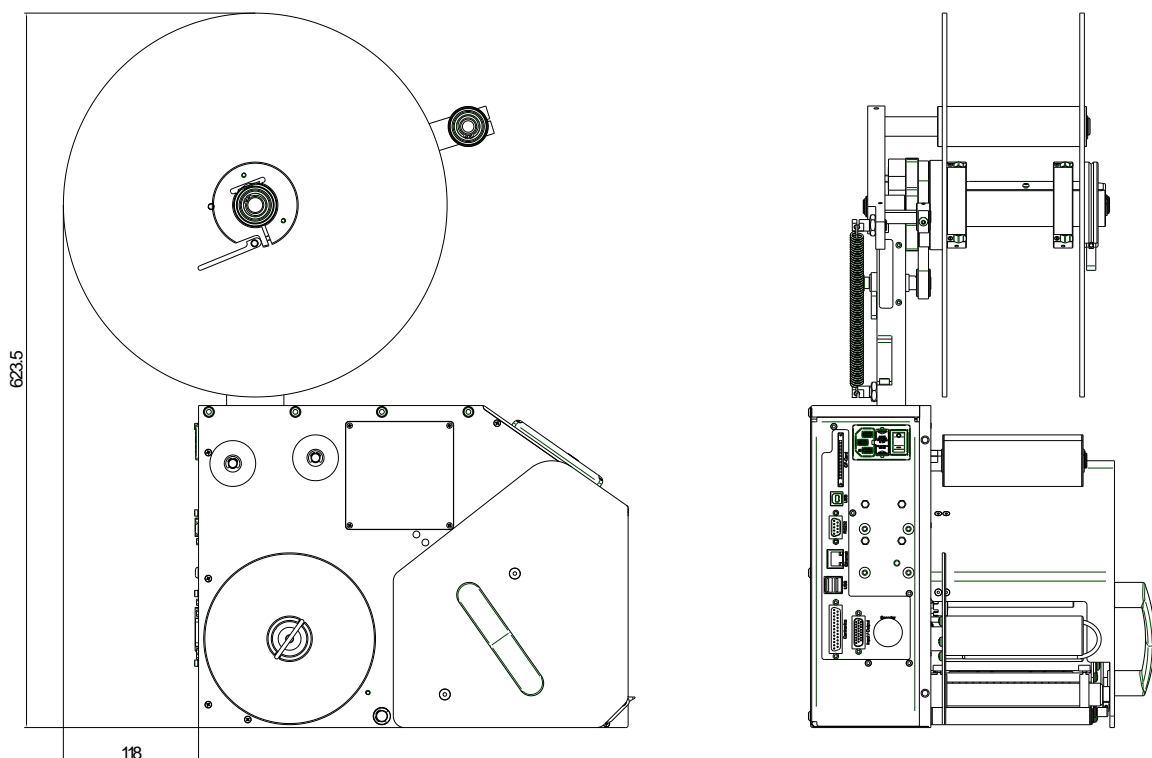
### Label roll

Max outside diameter	330 mm
Max label width	116 mm
Core diameter	Ø 40 mm (standard) Ø 76 mm (with additional core)

## Dimensions external unwinder PA 75B



## View of component assembly



## Adjustment of band brake

Depending on the mass of the used unwinding roll the switching point of the brake must be set. During the printing process, the lever should be between the top and bottom end positions. In order to optimally set the switching point and/or brake, the lever should be in the upper section while printing but not run against the limit stop.

When printing, the lever is pressed downwards until the brake is released and the mass of the label roll can move freely. Afterwards the lever moves again upwards and is braked again at the switching point. After braking, the lever should not be at the upper limit stop.

The switching point of the brake can be set with lever (B). Loosen the wing nut (A) and move the lever (B):

### Tension the brake band:

Turn the lever (B) counterclockwise and fix the position with the wing nut (A). The switching point is shifted downwards, i.e. the lever moves downwards when printing.

### Loosen the brake band:

Turn the lever (A) clockwise and fix the position with the wing nut (B). The switching point is shifted upwards, i.e. the lever moves upwards when printing.

