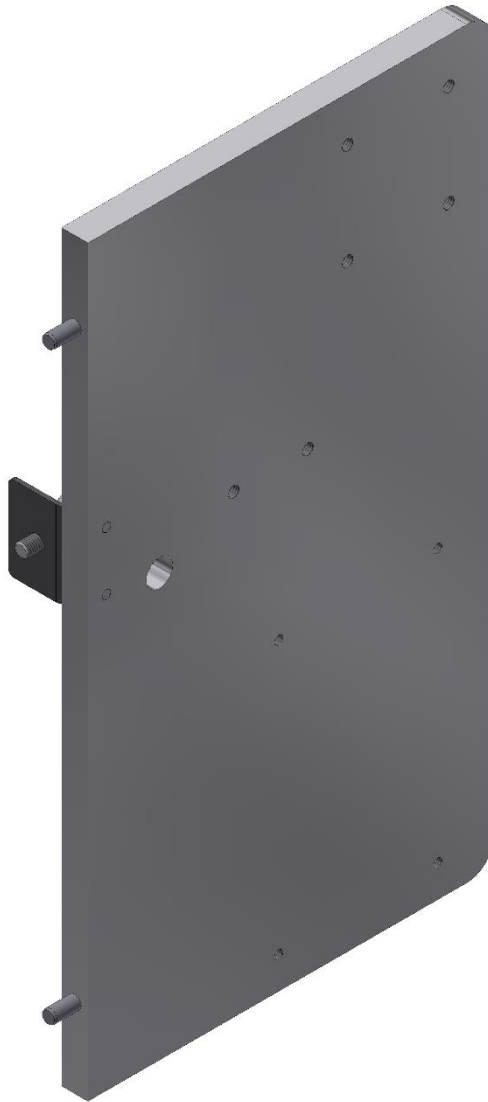


## Carrier plate extension

Part number 90.74.906



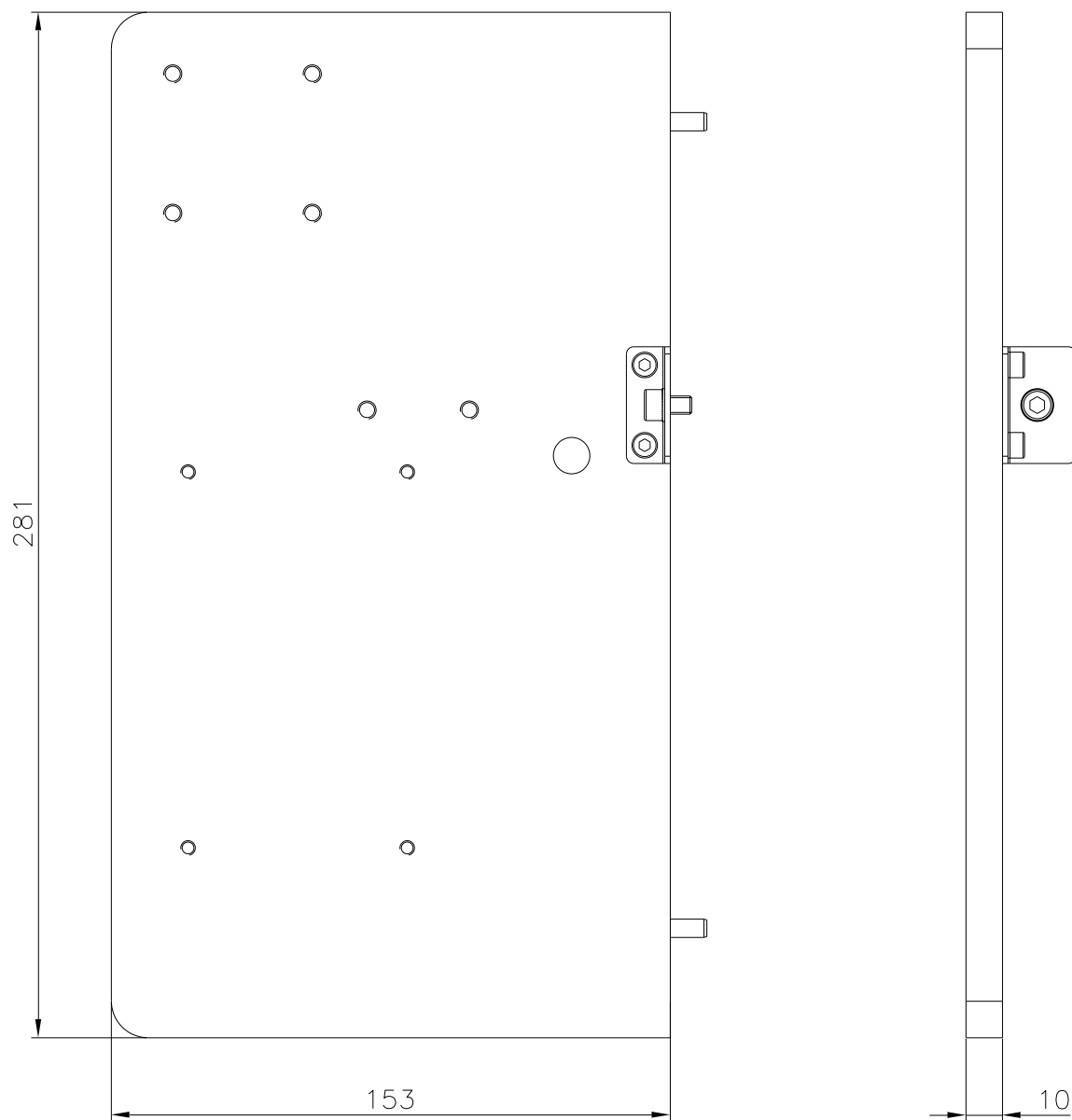
### Use

At the optional carrier plate extension different components can be attached e.g. signal lamp (part number 90.74.920), distribution box (part number 90.74.910) and the service unit of a pneumatic applicator (APX 7000).

### Installation

The installation is effected directly at the back side of the ILX carrier plate.

## Dimensions carrier plate extension



## View of component installation

